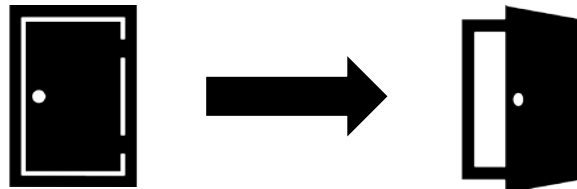




Be sure to be outside with a clear view of the sky when initiating the device.



Open top door



Reveals charging port and cap



Remove cap to power “ON”

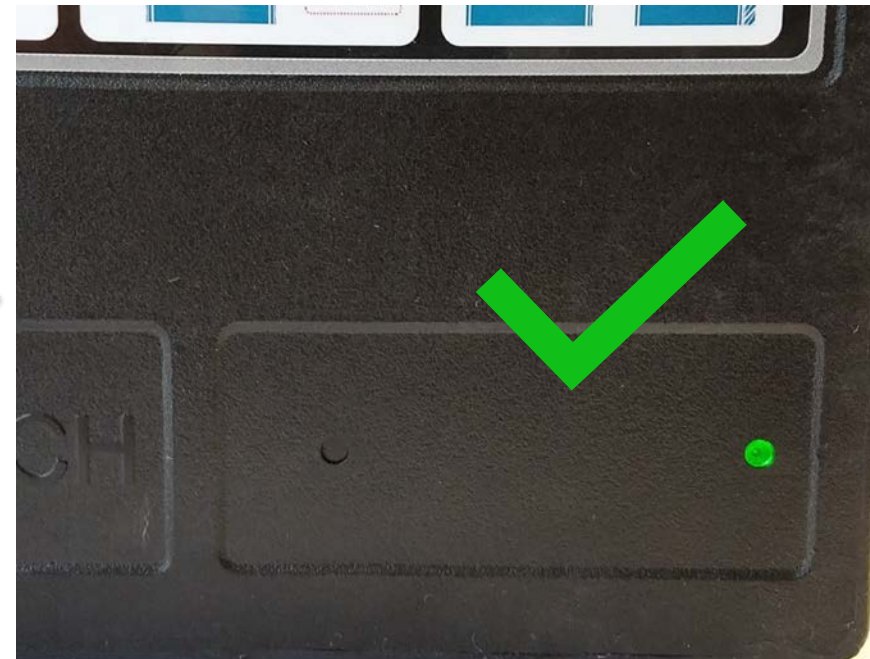
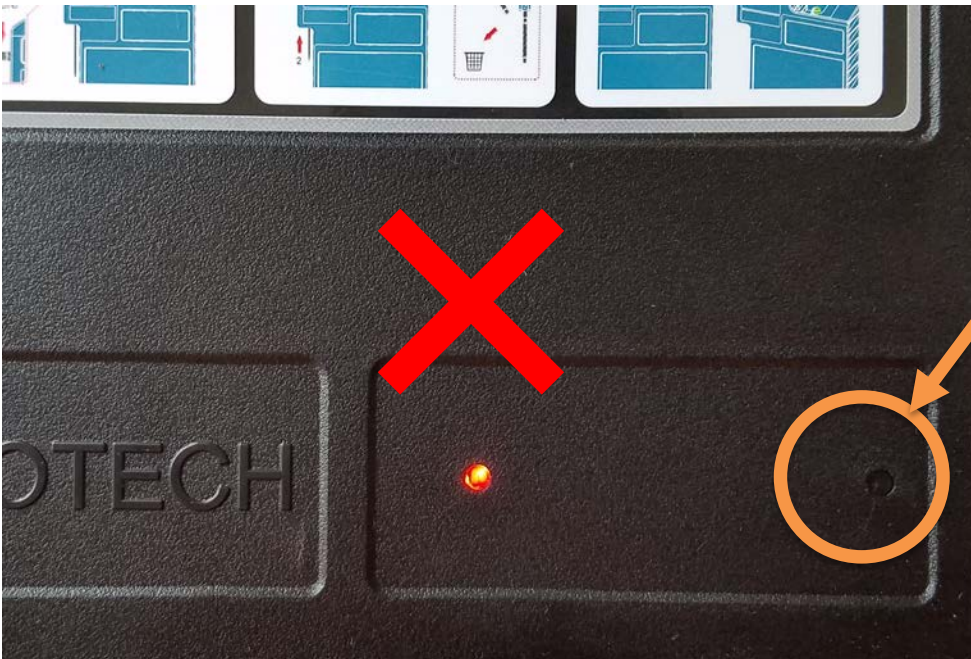


Do Not Twist

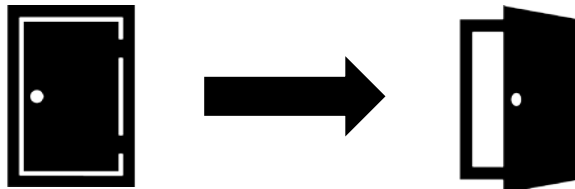
Flip green cap over and put back on upside down.



Wait for signal – LED Green



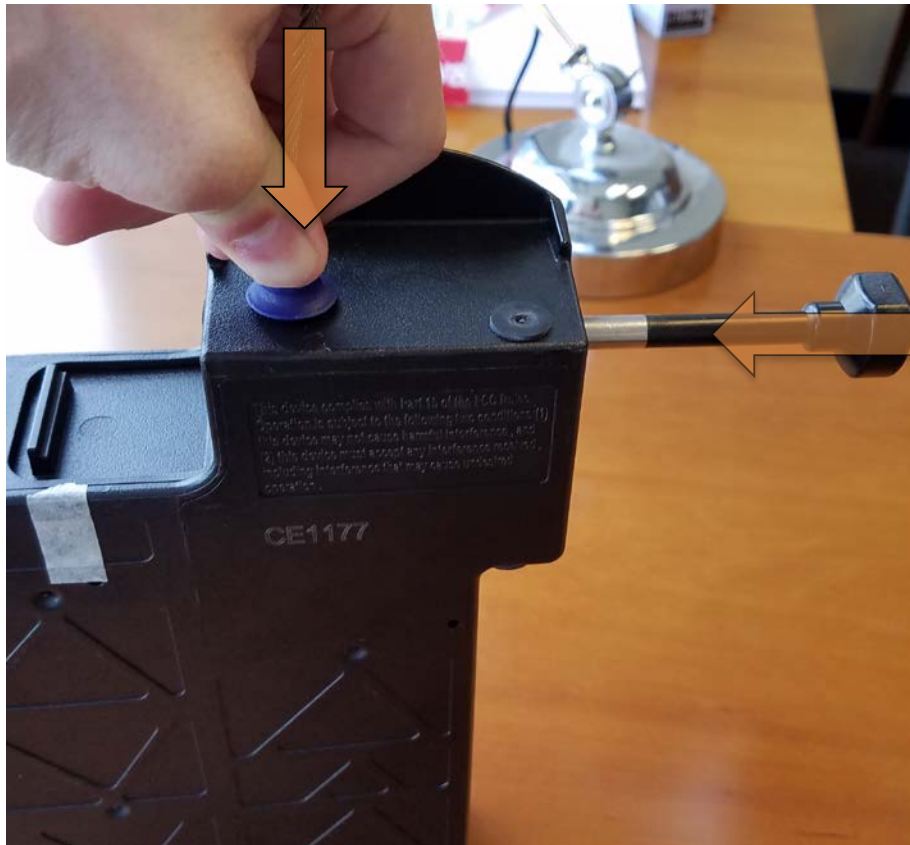
Close top door



Insert cable



Firmly press cable in while inserting customs bolt



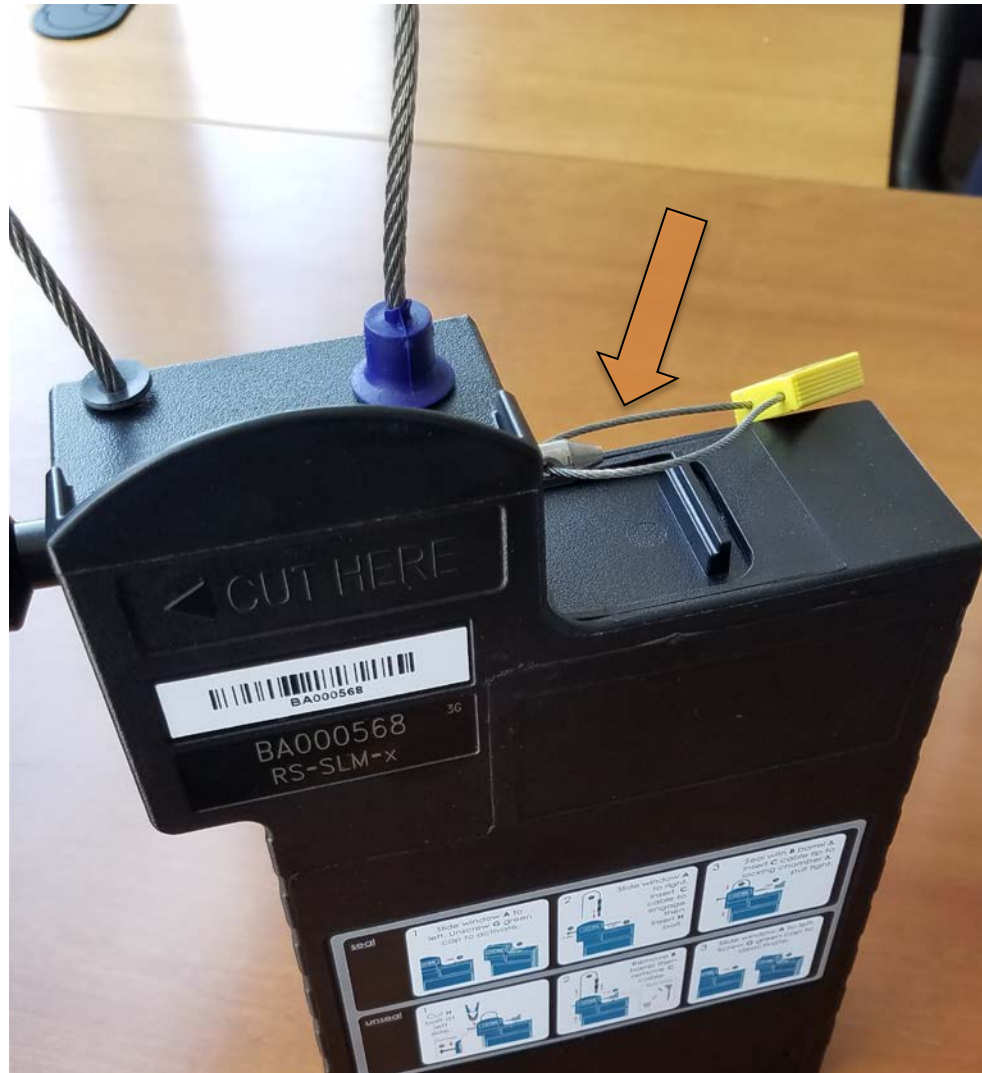
Hook cable onto container



Cable should come out the other side



Loop indicative seal



Device is now locked and on the container as pictured below.





AKUA
SECURE LOGISTICS